



HTC-1464T TRACK MOUNTED TUB GRINDERS

A HogZilla Grinder on Tracks is Unparalleled in Production and Mobility.

The HTC-1464T HogZilla is the top of the line track-mounted tub grinder. By integrating the powertrain & aggressive hammermill of our largest TC Series tub grinders into a track mounted chassis, maximum mobile production is achieved. The standard 1000hp Cat engine powers the hammermill of the Huge TC Series grinder while providing the efficiency and multiplied torque from the grinding industry's only true torque converter mill drive system. The hydrostatic tracks reduce the amount of support equipment and manpower required to move the grinder while offering the convenience of wireless remote control navigation through difficult job site conditions.

Top grinding professionals within the industry have proven that this track-mounted grinder with the production capabilities of the HogZilla TC Series is the most productive and convenient machine of its kind.



**DESIGNED FOR
PERFORMANCE AND
BUILT FOR RELIABILITY.**



**PROVEN ON THE TOUGHEST
JOBS WITH YEARS OF SERVICE.**

- Saves hours a day mobilizing grinder from pile to pile.
- Eliminates building roads to get the grinder moved in.
- Eliminates towing a truck and grinder on the job site.
- You can position the grinder for maximum production.
- Allows grinding in wet weather or on soft terrain.



**One-Person
Operation**

- Allows for convenient one-person operation. A Remote Controlled Dual Hydrostatic Drive is used to drive the tracks. The loader operator can stay in the cab while moving the HogZilla Grinder to different locations.

HTC-1464T SPECIFICATIONS

Horsepower	CAT 1000 (Standard)
Torque Converter	1200HP Rated
Hammermill Diameter	38"
Feed Opening	36" x 64"
Screen Area	4420 sq. in.
Screen Thickness	1"
Hammer Weight	70 lbs.
Hammer Number	24 - 48
Rod Diameter	3"
Tub Top Width	14'
Belly Conveyor	3 ea. 14" Augers
Stacking Elevator	48" x 24'
Trans. Width	11' - 11"
Trans. Length	45'
Total Weight(approx.)	103-107,000 lbs.

Specifications subject to change without notice. As improvements are made, actual product offered for sale may vary in design.

Estimated Maximum Production Range

(tons per hour*)

Yardwaste - 150-200

Stumps & Logs - 85-120

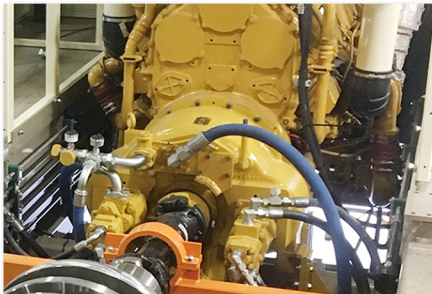
Pallet/Construction Waste - 75-120

*Any stated production information is estimated and is subject to variables that may fluctuate. Machine configurations include performance options that are changeable, and the actual materials being processed may differ resulting in actual production variations. Other production variables include user-based circumstances such as specific job site set up, material input procedures, & operational setting adjustments.

Torque Converter Drive -

When the load on the hammermill increases, the hydraulic fluid is automatically re-routed against the turbine blades, adding additional reaction torque. The engine is protected by the torque converter fluid absorbing shock loads and torsional vibrations from the hammermill assuring longer engine and drive system life.

No other drive offers all of the benefits a true torque converter will provide.



CW Mill Equipment Co., Inc.
14 Commerce Drive, Sabetha, KS USA

800.743.3491 or 785.284.3454 (Inside US)

Email: hogzilla@cwmill.com

Web: www.hogzilla.com



CAT 325L Tracks & Undercarriage Standard

Hydrostatic Tracks allow easier navigation in tight areas.

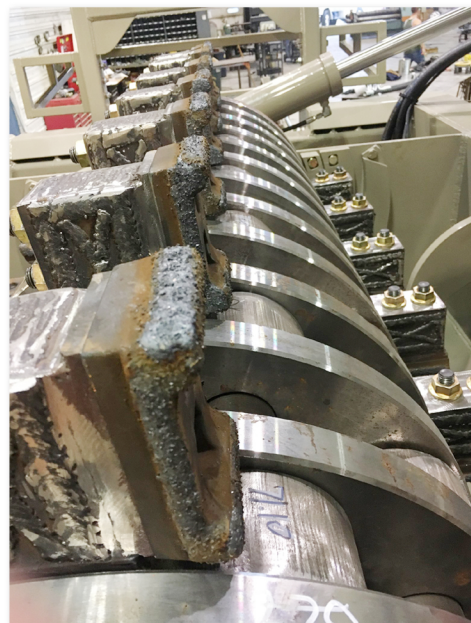


Shown with Optional Tire-Grinding Package

HUGE Precleaner for radiator and engine.

MASSIVE 38" Swing TC Series Hammermill

(Photo to the right, shown with Optional Hammer Tip Mount Face Wear Liners)



LET'S CONNECT.