



# FIRE SUPPRESSION SYSTEM OPTION

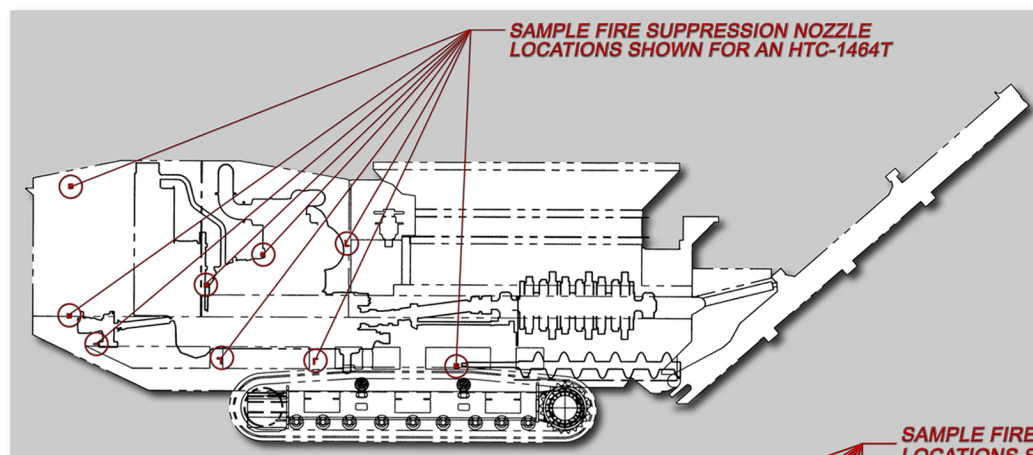
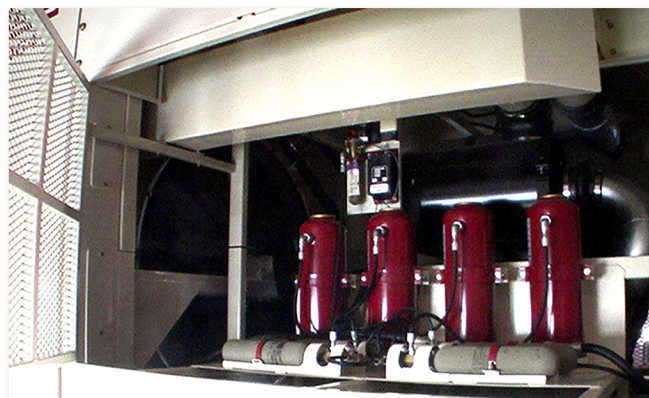
## INDUSTRIAL GRINDERS

Industrial grinders are often put to work in the toughest environments. As the end-users review the risk of fire in their application, they may find that they want increased fire suppression capabilities to better protect their investment. They may also target other benefits such as increased safety and reduced insurance rates.

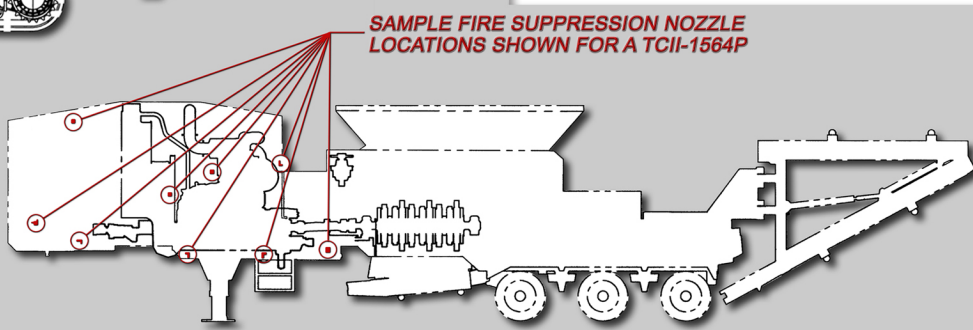
A wide variety of fire suppression systems are available starting with very simple manual actuation systems that allow an operator to deploy the system when he or she detects a fire. Automatic deploying systems are also available incorporating electronic detection points & off-hour protection.

Because of the wide range of suppression system capabilities and the diverse needs changing from one end-user to the next, whole system customization is offered to meet each individual owner's needs. This option is offered by utilizing the knowledge and experience of companies dedicated to the fire suppression industry such as representatives of Ansul brand fire suppression equipment. In working with fire suppression system professionals, the machine owner can better define their expectations.

System professionals can study machine owner expectations & recommend a complete system, parameters such as coverage area, deploy system type, volume of chemical agent, electronic detection points, and other details can all be designed around the customer's wants & needs. Contact CW Mill for a process review.



SAMPLE FIRE SUPPRESSION NOZZLE LOCATIONS SHOWN FOR AN HTC-1464T



SAMPLE FIRE SUPPRESSION NOZZLE LOCATIONS SHOWN FOR A TCII-1564P

**CW Mill Equipment Co., Inc.**

14 Commerce Dr., Sabetha, KS 66534

800-743-3491 785-284-3454

FAX: 785-284-3601

EMAIL: [hogzilla@cwmill.com](mailto:hogzilla@cwmill.com)

WEB: [hogzilla.com](http://hogzilla.com)

1019696

Suppression systems do not prevent fires & may not fully extinguish a fire. Proper machine maintenance, cleanliness, & following all fire safety precautions are always required.