



# WTC-1354T Track Tub Grinder

INDUSTRIAL GRINDERS



The HogZilla Model WTC-1354T Track Tub Grinder further expands the HogZilla Grinder line. This gives contractors, municipalities and waste processors HogZilla quality options in track driven wood recycling equipment.

The Model WTC-1354T on tracks is designed to move any grinding operation toward more productivity and profitability by increasing the efficiency of relocating the machine. The track drive reduces support equipment and manpower requirements while handling difficult terrain. Along with mobility, the WTC-1354T provides HogZilla's amazing production capabilities, sleek design, and heavy duty features.



The WTC-1354T offers BIG machine performance in a medium size package. The features that make HogZilla the preferred grinder for reliability and productivity are included in this smaller but very aggressive machine.



Visit our Website  
for further HogZilla Info.  
[www.hogzilla.com](http://www.hogzilla.com)



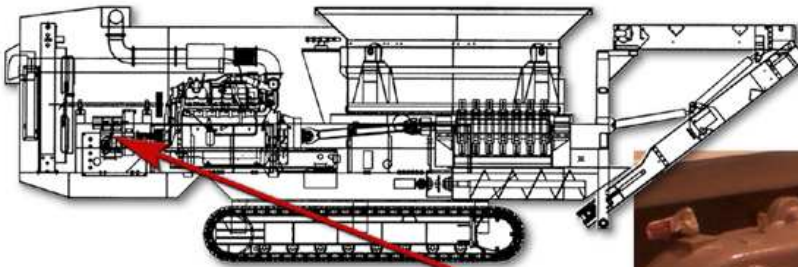
*HogZilla's optional Over-The-Road Package provides the independent mobility of hydrostatic tracks in difficult terrain while also providing easy transport from one location to another.*



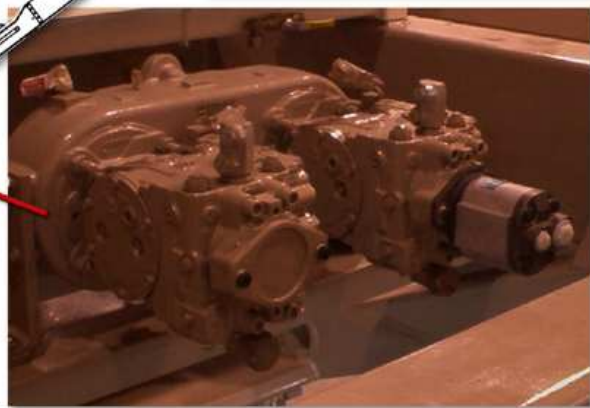
## WTC-1354T SPECIFICATIONS

Horsepower	CAT 800(Standard)
Torque Converter (Twin Disc)	800HP Rated
Hammer-Swing	31"
Feed Opening	30.5" x 54"
Screen Area	2214 sq. in.
Screen Thickness	1"
Hammer Weight	55 lbs.
Hammer Number	22
Rod Diameter	2"
Tube Top Width	13'
Belt or Augers	42" or 3 ea. 12" Augers
Elevator	42" x 20'
Trans. Width	11' - 11"
Trans. Length	38'
Total Weight (approx.)	85,000 lbs.

Specifications subject to change without notice. As improvements are made, actual product offered for sale may vary in design.



*A Remote Controlled Dual Hydrostatic Drive is used to drive the tracks.*



**CW MILL EQUIPMENT CO., INC.**

14 Commerce Drive  
 Sabetha, Kansas 66534  
 (800) 743-3491  
 (785) 284-3454  
 FAX (785) 284-3601  
 WEB: [www.hogzilla.com](http://www.hogzilla.com)  
 EMAIL: [hogzilla@cwmill.com](mailto:hogzilla@cwmill.com)

WCT42409 Supercedes 3.5.05 R: 2.2006

Represented by:

