



HTC-1462T MODEL

INDUSTRIAL GRINDERS

THE HOGZILLA HC SERIES
IS AVAILABLE IN VARIOUS
CONFIGURATIONS

- FIFTH-WHEEL PORTABLE
- SELF-LOADING
- TRACK-DRIVEN



HC-1462P MODEL



HC-1462P MODEL

Loaders can be custom built to your specifications while offering a wide variety of capacities, boom lengths, and grapple configurations. Some standard features for Hogzilla mounted loaders include high visibility, joystick controls, air conditioning, heat, radio, window grates, and a massive outrigger assembly to stabilize the loader.

All loaders
position easily for
economical shipping.

HTC-1462L MODEL



HTC-1464T MODEL
W/ OPTIONAL TIRE
GRINDING PACKAGE

The HC series grinders are built to be the most reliable high capacity grinders in their class. You can expect maximum production at the end of the day, be it acres, tons, or yards of material being ground. At 750 - 1050 horsepower and averaging 90,000lbs., the HC Series can handle your toughest jobs and last for years doing it. The power is delivered to the hammermill by Hydraulic Coupling or an optional Torque Converter Drive, which will multiply engine torque to the hammermill for even greater production.

HC
S
E
R
I
E
S

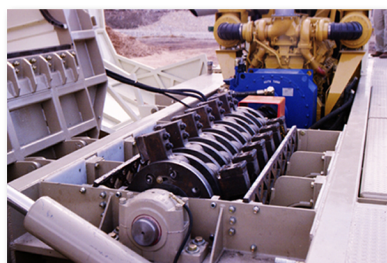
HogZilla Industrial Grinders

The Heavyweight of Waste Reduction

The HC series offers standard features not found in other large machines. Available in Portable, Track Mounted and Knuckle-Boom Loader configurations; the correct model is available for all situations requiring a high capacity grinder. Compare the reliability and productivity to other grinders in its class. The HC series grinders are heavy weights with BIG appetites. The solid construction of the HC Series is a definite requirement for years of successful operation on the toughest waste reduction jobs.



HC-1462L MODEL



A Voith Turbo Hydraulic Coupling transfers power from the engine to the hammermill. An optional Torque Converter drive multiplies engine torque for greater production. The fluid drive protects engine from hammermill shock. A heavy duty driveshaft couples the engine to the hammermill.

Production Rates (tons per hour)*

Yardwaste.....100-180
Stumps & Logs.....50-110
Pallets/C&D Waste...35-110

*Rates will vary with input material characteristics, discharge material requirements, machine set up, machine options selected, & operating procedures.

Standard Equipment

- Fluid Coupling Drive
- Radio Remote Control
- Radiator Precleaner Enclosure
- Engine Enclosure
- Vandalism Lock Package
- Hydraulic Rod Puller
- Lockable Tool Boxes
- Auxiliary Power Unit includes:

- 10HP Diesel Engine
- Air Compressor
- Service Hydraulic Pump
- 50ft Air Hose and Reel

Optional Equipment

- Torque Converter Drive
- Track Drive
- North Shore or Prentice 180E Loader
- Bolt-In Tire Grinding Package
- Back-side Mill Deflector
- Custom Thrown Object Restraint Variations
- Weld-on & Bolt-on Tip Variations
- Rigid & Swing Hammer Variations
- Radial Stacking Elevator
- Custom Fire Suppression Variations
- Mulch Color Attachment

NOTE: Additional options are available upon request, and custom variations may be available within the options upon request. Some options influence the capabilities, safety, performance, weight, & portability of the machine.

HC Series Specifications		HC-1462P	HC-1462L	HTC-1464T
Horsepower	Cat	820 - 1050	820 - 1050	1050 (Standard)
	Cummins	760 - 1050	760 - 1050	750-1050
	Detroit	760 - 1005	760 - 1005	760-1005
Hammer-Swing		31" x 62"	31" x 62"	38" x 64"
Screen Area		3813 sq. in.	3813 sq. in.	4610 sq. in.
Screen Thickness		1"	1"	1"
Hammer Weight		50 lbs.	50 lbs.	80 lbs.
Hammer Number		28	28	24 - 48
Rod Diameter		2"	2"	3"
Tub Top Width		14'	14'	14'
Conveyor Belt or Augers		42"	42"	48" or 3 ea. 14" Augers
Elevator Belt		36"	36"	48"
Trans. Width		11' - 11"	11' - 11"	11' - 11"
Trans. Length		48' - 6"	50' - 4"	45'
Total Weight (Approx. Per Options: Tracks, Loader, Throw Restraint, etc.)		85 - 94,000 lbs.	92 - 94,000 lbs.	104 - 108,000 lbs.

Specifications subject to change without notice. As improvements are made, actual product offered for sale may vary in design.



CW MILL EQUIPMENT CO., INC.

14 Commerce Drive - Sabetha, Kansas 66534

(785) 284-3454 FAX (785) 284-3601

(800) 743-3491 EMAIL: hogzilla@cwmill.com

Visit our Web Site at www.hogzilla.com